

C-11 Choline PET/CT scan is an imaging test used to help detect prostate cancer. The scan can pinpoint prostate cancer much sooner than conventional imaging.

With this technology, physicians can detect prostate cancer more precisely and provide more targeted, effective treatment.



If You are Coming to Decatur from Out-of-Town

A concierge service is provided by Decatur Memorial Hospital for out-of-town patients undergoing C-11 Choline PET/CT scan.

A representative will meet you at the Decatur, Illinois Airport or at your hotel, and guide you to the hospital. Please call **217-876-2338** to arrange concierge service during your visit.

Questions?

We are very happy to discuss the benefits of C-11 Choline. If you have any questions or concerns about the procedure, or if you would like to learn more, please call the Decatur Memorial Hospital.

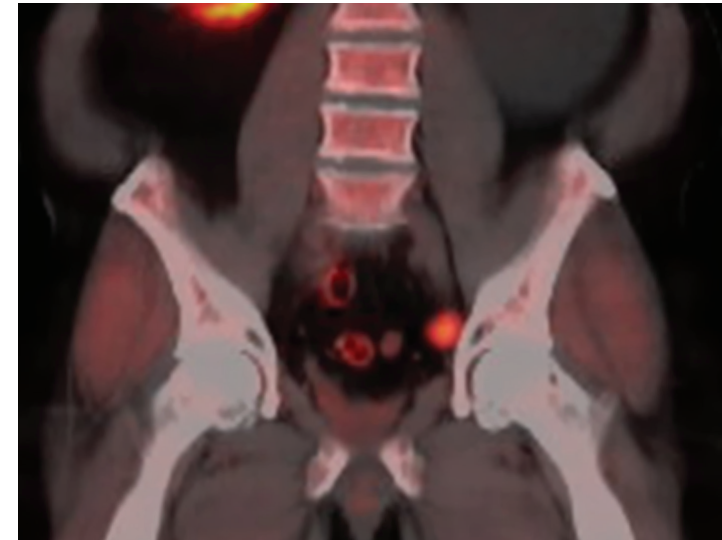
**PROSTATE CANCER
NAVIGATOR[®]**

217-876-2338



2300 N. Edward Street
Decatur, IL 62526
www.dmhcares.com

**GROUNDBREAKING
TECHNOLOGY
DETECTS
PROSTATE CANCER
BETTER THAN
EVER BEFORE**



**ONE of a SELECT GROUP
of U.S. hospitals to offer
C-11 Choline PET imaging
for prostate cancer detection.**

In the largest published study in the U.S. on **C-11 Choline imaging**, there was an

32%↑ increased detection rate of prostate cancer lesions which **WERE NOT IDENTIFIED**

on **conventional CT scan** and **bone scan.**



Day of the Imaging Test

The study will take approximately three and a half hours. You will check in at Admitting/Registration at Decatur Memorial Hospital 45 minutes before the scheduled scan time. You will be asked some questions about your personal health history.

Before Imaging

1 Fasting is required for at least **6 hours**

2 You will **undress completely** and put on a patient gown.

3 You will then be taken to the **PET Scan area.**

4 You will drink **16 ounces of water.**

5 The nuclear medicine technologist will **review the scan procedure with you.**

6 The nuclear medicine technologist will insert an IV in your arm and then **inject C-11 Choline.**

7 You will be taken to the **restroom** to urinate.

During Imaging

During the imaging procedure, PET scan and CT scan are done at the same time to show detailed internal anatomy. Using the scans simultaneously reveals a clearer picture of affected locations.

You will be taken to the PET Scan room for the imaging which will take approximately **30 minutes.**

Following the PET Scan, you will remain lying flat and be taken to the MRI room and moved into the MRI scanner.

The MRI scan will take approximately **30 to 45 minutes.**

After Imaging

Once the MRI is completed, you will be taken back to the dressing area to **change back into your clothes.**



The results will be given to your referring physician. We will also provide you with a **CD of your scans.**

